

2.5" Surface Mount



LENS OPTIC OPTIONS

SLOTLIGHT LED III

2.5" Individual Luminaires and Straight Runs

- Continuous line of light
- Available in a variety of lengths to suit any application
- Patented roll lens for seamless installation
- Rollable lens for all direct optics: opal flush / regressed (150' max length) and asymmetric (50' max length) Uniformly illuminated corners
- Available with occupancy and daylight sensors
- UGR <19 with LRO Lens



Suitable for Damp and Wet Locations

PROGRAMMABLE LM/FT RANGES *

OPTIC	3000 K		3500 K		4000 K	
	MIN	MAX	MIN	MAX	MIN	MAX
Opal	342	933	351	956	354	965
LRO	274	748	281	766	284	773
Asymmetric	188	1026	192	1048	194	1059
Indirect Batwing	411	1120	421	1147	427	1155
Indirect Asymmetric	135	734	138	752	139	760

* Exact programming levels available as a modification.

Order Code

1	2	SM	4	5	6	7	9	9	10	11	12	13	14	15	16
1 FIXTURE	SL3I Individual ¹ SL3R Run ²														
2 WIDTH	2 2.5"														
3 MOUNTING	SM Surface Mount														
4 WHOLE LENGTH	XXXX Length in 1" Increments														
5 FRACTIONAL LENGTH	N 0/8 A 1/8 B 2/8 C 3/8 D 4/8 E 5/8 F 6/8 G 7/8														
6 DIRECT OUTPUT	09 900 lm/ft 08 800 lm/ft 07 700 lm/ft 06 600 lm/ft 05 500 lm/ft 04 400 lm/ft														
7 DIRECT OPTIC	P Opal Flush (Roll Optics) L Luminance Reducing ³ A Asymmetric (Roll Optics) ³ N None														
8 CRI	9 90 CRI														
9 CCT	30 3000 K 35 3500 K 40 4000 K 00 Tunable White 2700-6500 K ⁴ ZS Zumtobel SPECTRUM ⁴														
10 DRIVER	U 0-10V, 1%, 120 V / 277 V D DALI, 1%, 120 V / 277 V H Lutron EcoSystem, 1%, 120 V / 277 V C 0-10 V, 1%, 347 V T Tunable White DALI Signal														
11 FINISH	W White S Silver B Black														
12 CONTROL OPTIONS	N None E Enlighted ⁵ W Wireless ⁵														
13 ACCESSORIES *	C EM Circuit ⁶ B EM Battery ⁷ P Chicago Plenum N Chicago Plenum and EM Circuit ⁶ E Chicago Plenum and EM Battery ⁷														
14 EM START	1 Start EM 0 None														
15 EM MID	X Quantity from 1 to 9 0 None														
16 EM END	1 End EM 0 None														

* COMPLETE 13-16 IF EMERGENCY OPTIONS ARE REQUIRED

- Must be between 24" and 96" in length. Individual fixtures will be provided with roll optic installed.
- Minimum length is 96 1/8". Roll optic for run lengths will ship separately and need to be ordered as an additional line item.
- Luminance Reducing Optic is only available in 600 lm/ft, 500 lm/ft and 400 lm/ft packages. Asymmetric Optics only available with 400 lm/ft, 500 lm/ft and 600 lm/ft packages.
- Tunable White and Zumtobel SPECTRUM fixtures must be 4' or over in length and can only be supplied in 1' increments, and are not available with Asymmetric Optics. Must be ordered with **T** driver option.
- Only available with 0-10 V dimming. Enlighted Control not available with wet or damp rating.
- Add EM circuit option when designating only a portion of a continuous run to be circuited for emergency. If an entire fixture or entire run is EM then this option is provided as standard.
- EM battery available in 4' or greater sections. EM battery is not available with 347 V driver option. EM battery not available with wet location rating.

2.5" Surface Mount Corner

LENS OPTIC OPTIONS

SLOTLIGHT LED III

2.5" Configurations with Corners

- Continuous line of light
- Available in a variety of lengths to suit any application
- Patented roll lens for seamless installation
- Rollable lens for all direct optics: opal flush / regressed (150' max length) and asymmetric (50' max length)
- Uniformly illuminated corners
- Available with occupancy and daylight sensors



Suitable for Damp Locations

Order Code

1	SL3C	2	3	4	5	6	7	9	9	10	11	12	13	14	15	16
2	SL3C Configurations															
3	FIXTURE	2 2.5"														
4	WIDTH	SM Surface Mount														
5	MOUNTING	XXXX Length in 1" Increments														
6	WHOLE LENGTH	L 1 Corner U 2 Corners R Rectangle S Square Z Custom														
7	TYPE	09 900 lm/ft 08 800 lm/ft 07 700 lm/ft 06 600 lm/ft 05 500 lm/ft 04 400 lm/ft														
8	DIRECT OUTPUT	P Opal Flush (Roll Optics) L Luminance Reducing ¹ A Asymmetric (Roll Optics) N None														
9	DIRECT OPTIC	9 90 CRI														
10	CRI	30 3000 K 35 3500 K 40 4000 K 00 Tunable White 2700–6500 K ² ZS Zumtobel SPECTRUM ²														
11	CCT	U 0-10 V, 1%, 120 V / 277 V D DALI, 1%, 120 V / 277 V H Lutron EcoSystem, 1%, 120 V / 277 V C 0-10 V, 1%, 347 V T Tunable White DALI Signal														
12	DRIVER	W White S Silver B Black														
13	FINISH	N None E Enlighted ³ W Wireless ³														
14	CONTROL OPTIONS	C EM Circuit ⁴ B EM Battery ⁵ P Chicago Plenum N Chicago Plenum and EM Circuit ⁴ E Chicago Plenum and EM Battery ⁵														
15	ACCESSORIES *	1 Start EM 0 None														
16	EM START	X Quantity from 1 to 9 0 None														
	EM MID	1 End EM 0 None														
	EM END															

* COMPLETE 13-14 IF EMERGENCY OPTIONS ARE REQUIRED.

1 Luminance Reducing Optic is only available in 600 lm/ft, 500 lm/ft and 400 lm/ft packages. Asymmetric Optics only available with 400 lm/ft, 500 lm/ft and 600 lm/ft packages.

2 Must consult factory for Tunable White or Zumtobel SPECTRUM configurations, and are not available with Asymmetric Optics. Must be ordered with T driver option.

3 Only available with 0-10 V dimming. Enlighted Control not available with damp rating.

4 Add EM circuit option when designating only a portion of a continuous run is to be circuited for emergency. If an entire fixture or entire run is EM then this option is provided as standard.

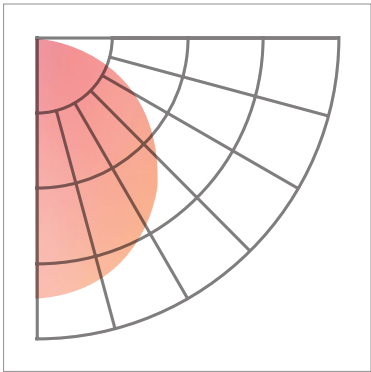
5 EM battery available in 4' or greater sections. EM battery is not available with 347 V driver option.

Component Order Codes

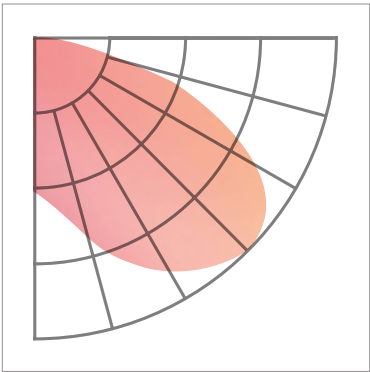
The lens is a polycarbonate, field cuttable, roll lens shipped in various length rolls.

2.5" Width			
25' Roll Optic Opal Flush	M0048003-25	25' Roll Optic Luminance Reducing	05600202
50' Roll Optic Opal Flush	M0048003-50	25' Roll Optic Asymmetric	05600208
100' Roll Optic Opal Flush	M0048003-100	50' Roll Optic Luminance Reducing	05600203
150' Roll Optic Opal Flush	M0048003-150	50' Roll Optic Asymmetric	05600209
Lens Removal and Cutting Kit	11055252		
Lens Joiner Kit, White	11055255		
Lens Joiner Kit, Black	11055421		
Lens Joiner Kit, Titan	11055426		

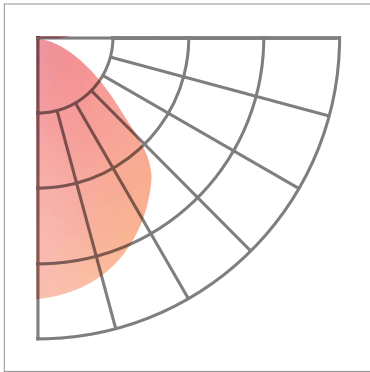
Optical Performance



OPAL OPTIC | 800 LM/FT | 935



ASYMMETRIC OPTIC | 600 LM/FT | 935



LRO OPTIC | 600 LM/FT | 935

Average Luminance cd/m ²		
Vertical Angle	Horizontal Angle 0°	
0	16530	
45	15090	
55	14210	
65	13120	
75	10940	
85	5906	

Average Luminance cd/m ²		
Vertical Angle	Horizontal Angle 0°	
0	29600	
45	29590	
55	21400	
65	16300	
75	11570	
85	4391	

Average Luminance cd/m ²		
Vertical Angle	Horizontal Angle 0°	
0	15930	
45	9438	
55	6621	
65	4071	
75	3438	
85	1401	

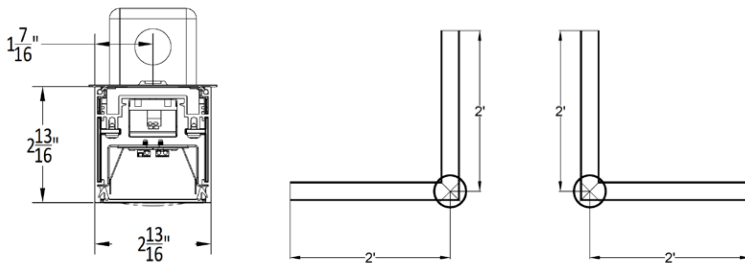
Lumens*

		DIRECT														
		Opal						LRO			Asymmetric					
		400	500	600	700	800	900	400	500	600	400	500	600	700	800	
		LM/W	LM/W	LM/W	LM/W	LM/W	LM/W	LM/W	LM/W	LM/W	LM/W	LM/W	LM/W	LM/W	LM/W	
3000 K	LM/W	85	84	83	82	80	79	69	68	67	94	93	92	90	95	
	W/ft	4.7	6.0	7.2	8.6	10.0	11.4	5.8	7.4	9.0	4.3	5.4	6.6	7.8	8.4	
3500 K	LM/W	87	86	85	84	83	81	71	70	69	96	95	94	93	97	
	W/ft	4.6	5.8	7.1	8.4	9.7	11.1	5.6	7.2	8.8	4.2	5.3	6.4	7.6	8.2	
4000 K	LM/W	88	87	86	85	83	82	72	71	69	68	102	101	99	98	
	W/ft	4.5	5.7	7.0	8.3	9.6	10.9	5.6	7.1	8.7	3.9	4.9	6.0	7.0	8.1	

* Exact programming levels available as a modification.

We reserve the right to change, without notice, specifications or materials. Supporting documentation found on zumtobel.us are the most recent versions and supersede all other versions that exist in any other printed or electronic form.

Dimensions



Technical Detail

1) Construction: The Luminaire consists of a painted aluminum housing and a choice of opal/clear polycarbonate roll optics with integrated continuous feed wiring.

2) Wattage & CCT: Fixture is available in lumen packages of 900 lm/ft, 800 lm/ft, 700 lm/ft, 600 lm/ft, 500 lm/ft and 400 lm/ft. Wattage is determined by lumen package and CCT chosen. Available in 3000 K, 3500 K or 4000 K color temperatures with 90+ CRI. 3-Step MacAdam Ellipse.

3) Driver: The unit is available with standard 120 V / 277 V 0-10 V dimming driver (1%), 347 V 0-10 V dimming driver (1%), Lutron LDE1 Hi-lume 1% digital EcoSystem with SoftOn/ FadeToBlack, or DALI dimming driver (1%). For non-dimming applications a 0-10 V driver will be provided, cap off the two control wires and connect the hot/neutral and ground as normal. Wireless dimming is only available with all 0-10 V driver options.

Tunable White fixtures have the option of DALI controlled dimming signal or Osram Dexal. If Osram Dexal is a requirement compatible control interfaces must be purchased directly from Osram. DALI dimming option uses protocol 8. Wireless dimming is available through eidoLED BLE radio and controlled by 4remote BT app or Bluetooth switches.

4) Zumtobel SPECTRUM: Please use QR code for complete details.



5) Optic/Lens: The unit is available with an Opal Flush optic obtained from a polycarbonate roll optic that is available in 25', 50', 100' and 150' continuous rolls for seamless run effect. A joining kit with cover plate will be required every 150' for longer run lengths. Field cutting instructions are provided with the standard installation guide. A lens cutting tool kit is available to order as a separate accessory. Roll lens for LRO and asymmetric fixtures are available in 25' rolls, a joining kit with cover plate will be required every 25' for longer run lengths. If UGR <19 is a project requirement please order with LRO roll optic.

Asymmetric optic can be provided in either direction perpendicular to the length and will be designated 'right' or 'left' based on power feed in. The factory will consult client for desired asymmetric optic direction.

6) Mounting: Concealed mounting locations provided 6" or 18" from ends of fixtures. Consult installs for complete details.

7) Length: Individual fixtures and straight runs lengths can be ordered in exact length increments of 1/8" with a 2' minimum. Lengths of 8' and under are provided as individual fixtures. Lengths greater than 8' are provided as runs comprising of start, middle and end sections.

Configurations total length should be measured from the outside perimeter of the configuration to the nearest foot. Shop drawings with the

exact configuration measurements will be provided with all configuration orders for approval prior to manufacture.

Individual units have pre-installed roll optic within the fixture, for runs and configurations the roll optic will be provided in a separate roll to be field installed and will appear as an additional line item on shipping documentation.

8) Controls: Fixtures can be purchased with Enlighted ready controls and daylight saving/ occupancy sensor, this option requires an Enlighted compatible control interface provided by others to function. All orders with a sensor chosen will be provided with drawings showing the exact sensor placement.

8) Emergency Options: Fixtures can be either purchased for emergency circuit or emergency battery operation. EM Battery fixtures are available in 8' sections and can be ordered as start, middle or end fixtures. The factory will consult with the client for EM placement on configurations. Average Lumen output for EM Battery is 600 Lumens.

9) Life: 50,000 hours, L85.

10) Weight: 4.45 lbs per 2ft.

11) Declare Information:

